



PEOPLE YOU CAN TRUST

SERVING OHIO SINCE 1973





WE PUT OUR CUSTOMERS FIRST

“

Our mission is to provide an exceptional customer experience through professional installation, service of the highest quality products, at a fair price, and in a timely manner.

”

OUR STORY

Established in 1973 by Meno Yoder, Wayne Garage Door Sales & Service has a rich history of providing exceptional residential and commercial solutions. Since Robert Habeger joined the team in 2007, our brand has undergone significant growth and transformation. With a vision to become the go-to one-stop shop for residents and businesses throughout Ohio, Robert's leadership has been instrumental in expanding our services and product offerings.

In 2017, Robert became the sole owner of Wayne Garage Door and made it a priority to build a strong and talented team. Recognizing the importance of upholding the company's solid reputation in Tuscarawas County and beyond, he sought out the best individuals for each job. Our success story lies in our commitment to quality workmanship across all aspects of our business. Staying true to our original slogan, "More than just garage doors," we have

continuously expanded by opening new locations, adding additional divisions, and growing our product

Throughout the years, we have made strategic additions to our brand to better serve our customers. In 2011, we introduced Overhead Door Co of Akron™ to cater to the needs of customers in the Akron, Ohio area. In 2021, we further expanded our offerings with the addition of Maxx Electric, enabling us to provide top-notch electrical services for homes, businesses, and beyond. Additionally, we established our Door Tech & Security Division, specializing in Automatic Doors and Access Control systems, to serve the commercial sector. Regardless of the company you choose within our brand, our mission remains the same: to deliver an exceptional customer experience by offering professional installation, service of the highest quality products, all at a fair price, and with a commitment to timeliness.



"Our commitment to exceptional workmanship, cutting-edge technology, and unparalleled customer service remains unwavering. "

We continue to strive towards being the one-stop solution for all residential and commercial door needs, and I am excited to see our brand evolve and thrive in the years to come. We offer high-quality products from the top brands in the industry. Our local, experienced team ensures that you are getting the right product, installed properly, and serviced in a quick and dependable manner. Whether it is for your home or business, we offer products and solutions to fit your needs.

Robert Habeger
President

OUR DIVISIONS





RESIDENTIAL SOLUTIONS

Since 1973, Wayne Door has built a trusted reputation as a provider of professional sales, installation, and residential services. With over 50 years of industry experience, we continuously evolve to meet our core objective of serving our customers. With three conveniently located branches across Ohio, our experienced team is accessible to customers in various regions. Whether you seek to replace an existing product or enhance your home's curb appeal, Wayne Door offers a wide selection of high-quality, durable, and aesthetically pleasing garage doors that cater to diverse tastes and architectural styles. Through strategic partnerships with industry-leading brands, our Residential Product Line ensures the finest selection of top-of-the-line, high-quality products to meet the needs of our valued customers.



The Wayne Door Advantage: Why Customers Keep Choosing Us



Professional Installation

Our experienced installation teams are here to provide reliable and efficient installation services for a wide range of products, including garage doors, openers, windows, entry doors, and more. With our expertise and attention to detail, you can trust us to ensure a seamless and hassle-free installation process, leaving you with products that are properly installed and built to last.



Trusted Service

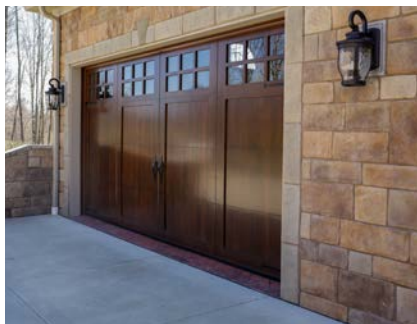
With our dedicated team of skilled technicians, you can trust us to provide expert maintenance services, including routine inspections, lubrication, adjustments, and repairs as needed. We are committed to ensuring the longevity and smooth operation of your valuable investments, giving you peace of mind and convenience.



Enhance and Protect

Our skilled team specializes in a range of services, including expert framing, efficient jamB repair, and precise aluminum wrapping. With meticulous attention to detail and a commitment to quality craftsmanship, we ensure your project receives the utmost care and attention it deserves.

PRODUCT LINE-UP



GARAGE DOORS

Discover our diverse range of styles and materials to suit your design aesthetic and budget. Count on our dedicated team to assist you in selecting the perfect option for your home and provide professional installation services.



OPERATORS

Trust us to meet your garage door operator needs with our wide range of reliable and budget-friendly options. From trusted brands like LiftMaster & Linear, we deliver the best solutions for your home.



GATE OPERATORS

Elevate the security and convenience of your home with our advanced Residential Gate Operators, delivering seamless access control and peace of mind for your family.



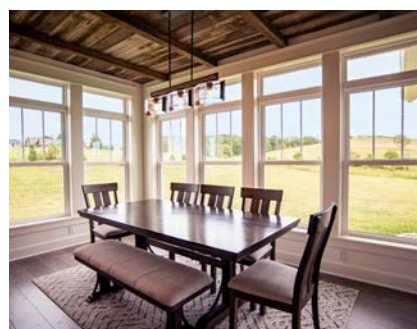
ENTRY & STORM DOORS

Make a lasting first impression with energy-efficient, beautiful, and secure ProVia doors. Enjoy a comfortable home year-round, without compromising on style.



PATIO DOORS

Elevate your home with ProVia's energy-efficient Patio Doors, combining enhanced aesthetics, functionality, and security to reduce energy bills and elevate your living experience.



WINDOWS

Discover our long-lasting, energy-efficient window solutions. ProVia Windows prioritize security and energy efficiency, while our expert team is ready to help you find the ideal options



VINYL SIDING

Enhance your home's exterior with ProVia's durable vinyl siding, combining luxurious aesthetics with exceptional weather resistance, ensuring long-lasting beauty that withstands the elements.



MANUFACTURE STONE

Experience the unparalleled beauty and durability of ProVia's meticulously crafted manufactured stone, designed to enhance the aesthetic appeal and value of your space with its authentic look and feel.



PANDA WINDOWS & DOORS

Blur the line between indoor and outdoor spaces and create magnificent entryways and spacious living spaces. Discover the beauty, durability, and flexibility of Panda Windows & Doors





COMMERCIAL SOLUTIONS

For over five decades, Wayne Door has been a trusted provider of exceptional commercial overhead doors, delivering expert sales, installation, and service. Since our establishment in 1973, we have continuously grown and adapted, remaining true to our core objective of prioritizing customer satisfaction. Our rich history is defined by the valued relationships we establish with our clients, whom we consider partners in business. With a commitment to understanding your unique needs and those of your customers, we are dedicated to providing the best solutions that exceed expectations.



Your Trusted Partner in Commercial Construction

Providing Support & Guidance From Start To Finish



Consulting & Planning

Wayne Door offers comprehensive consultation and assistance to support the planning process of commercial projects, ensuring that every aspect is carefully considered and optimized for success.



Evaluating & Verifying

With our expertise, Wayne Door can thoroughly evaluate and verify commercial projects, ensuring compliance, quality assurance, and optimal functionality at every stage.



Executing & Delivering

Count on Wayne Door to execute and deliver on commercial projects with precision and efficiency, ensuring timely completion and exceeding expectations in terms of quality and performance.

Customizable Solutions Including:

Specialty Doors | Clean Room Pharmaceutical | High Speed Doors | Rolling Doors | Cold Storage Doors | Gate Operator
Loading Dock Equipment | Dock Lifts & Levelers | Fire Doors | Certified Fire Door Technicians | And More!

PRODUCT LINE-UP



COMMERCIAL SOLUTIONS

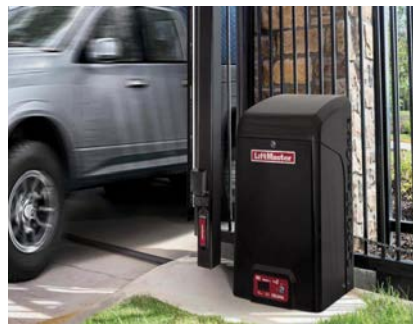
Insulated or non-insulated, transparent or opaque, at Wayne we offer a variety of commercial grade sectional doors, perfect for any job.



COMMERCIAL OPERATORS

Wayne offers a wide range of garage door operators specifically tailored to meet the diverse commercial needs, delivering top-notch performance, security, and reliability.

LiftMaster



GATE OPERATORS

With gate options for nearly any setting, let the professionals at Wayne help you control vehicle access to your facility.

LiftMaster



FIRE RATED DOORS

Wayne offers a comprehensive selection of fire-rated doors designed to meet stringent safety regulations and protect commercial spaces, providing reliable fire resistance and peace of mind for businesses.

CORNELLCOOKSON
The door to building excellence®



HIGH-SPEED DOORS

Wayne provides a wide range of high-speed doors that are specifically designed to enhance efficiency, productivity, and security in commercial settings, offering rapid opening and closing speeds without compromising on durability and safety.

HORMANN **TNR** **JAMISON DOOR**



COMMERCIAL PASS DOORS

We offer a wide range of commercial pass doors that are specifically designed to meet the diverse needs of businesses, offering durable construction, enhanced security features, and seamless integration with commercial building structures.

ASSA ABLOY



LOADING DOCK EQUIPMENT

At Wayne, we specialize in providing loading dock equipment solutions that can help businesses optimize their logistics and streamline their supply chain operations. Our team can help find custom solutions for your business needs.

BLUE GIANT



ROLLING DOORS

Rolling doors deliver safety and security while the professionals at Wayne deliver top-notch expertise and service.

CORNELLCOOKSON
The door to building excellence®

IDA
International Door Association





AUTOMATICS SOLUTIONS



Automatic door solutions for businesses are becoming increasingly popular due to their convenience and accessibility. They provide a hands-free option for customers and employees, while also improving energy efficiency and security. Our team of skilled technicians provides excellent customer service and support, ensuring that all installations and maintenance are performed to the highest standards. By choosing Wayne Door for all their

automatic door needs, businesses can trust that they are investing in a long-lasting and efficient solution that will improve accessibility and convenience



Automatic Sliding Doors



ADA & Handicap Compliant Doors



Automatic Swing Doors



Touchless Automation Sensors



Automatic Pharmaceutical Doors



Bi-Fold Automatic Doors



Industries We Serve:

- Constructions
- Medical & Healthcare

- Hospitality
- Education

ACCESS CONTROL SOLUTIONS



Protecting your business and ensuring the safety of your employees and assets is crucial. Choosing an access control system can help you achieve this. With an access control system, you can control who has access to your premises and monitor activity in real-time. The benefits of adding an access control system to your business are numerous, including enhanced security, improved access management, increased convenience, and cost

effectiveness. By using an access control system, you can eliminate the need for keys and provide employees with a more convenient way to enter and exit the premises. With the latest technology and integration with other security systems, you can provide a comprehensive security solution for your business, ensuring that your business is secure, and your employees are safe.



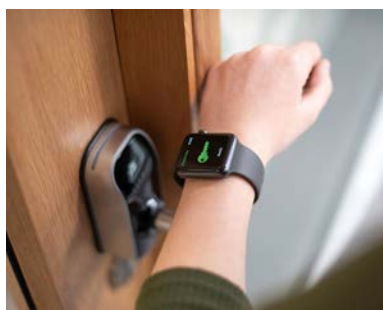
Cameras



Interior Wireless Locks



Video Entry Control



Digital Credentials



Cloud Based Software



Self Storage Solutions

Paxton10

VITEK
INDUSTRIAL VIDEO PRODUCTS, INC.

PTI SECURITY SYSTEMS

pd.k

- Pharmaceutical
- Food & Restaurants

- Retail
- Government

- Storage Facilities
- School & Universities

The Genuine. The Original.



Overhead Door Company of Akron™

Proudly Serving Akron, Ohio & Surrounding Areas Since 1972!

Trusted Service. Proven Quality.

As a part of the Overhead Door family, we have been serving the Akron area since 1972. Our business specializes in providing quality garage door products to residential and commercial clients. Overhead Door Company of Akron™ is conveniently located in the heart of Cleveland, Canton, Medina, and Youngstown.



Residential Solutions



Garage Doors



Openers



Entry Door



Gate Systems

Commercial Solutions



Thermacore Doors



Sectional Steel Doors



Insulated Sectional Steel-Back Doors



Wind Load Doors



Rolling Service Doors



Rolling Steel Shelter Doors



Rolling Sheet Doors



Rolling Shutter Doors



High Speed Fabric Doors



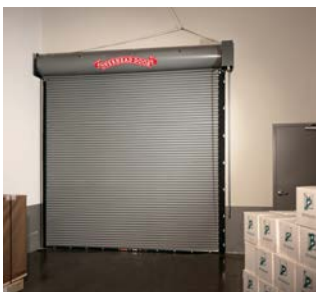
High Speed Insulated Fabric Doors



High Speed Rubber Doors



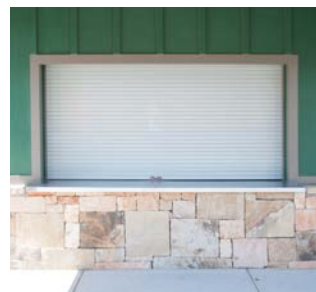
High Speed Metal Doors



Fire Rated Doors



Aluminum Glass Doors



Counter Shutters



Security Grilles



Electrical Service You Can Trust!

Our Services



Residential

- Electrical Repairs & Troubleshooting
- Lighting Installations & Upgrades
- Ceiling Fan Installations
- Electrical Panel Upgrades
- Generator Installations
- Outdoor Lighting & Security Systems



Commercial & Industrial Services

- Electrical system upgrades
- Lighting installations and upgrades
- Electrical repairs and maintenance
- Data and communication wiring
- Electrical safety inspections
- Generator installations
- Parking lot lighting

... and more!

When you need electrical services for your home or business, you want to choose a reliable and experienced electrician. At Maxx Electric, we offer a full range of residential, commercial, and industrial electrical services to keep your property running smoothly. Our team of electricians have the expertise, experience, and equipment to handle any electrical issue, big or small.



Emergency Services

We also offer 24/7 emergency electrical services. Whether it's a power outage, faulty wiring, or any other electrical emergency, our team is available to help.

Why Choose Maxx Electric?



When it comes to finding reliable electrical services, the team at Maxx should be your top choice. Our experienced professionals offer comprehensive solutions and have earned the trust of our residential, commercial and industrial customers throughout Ohio.

EXPERTISE

Our team of electricians has years of experience and training to ensure that every job is done right.

QUALITY

We use only the highest quality materials and equipment to ensure the safety and reliability of your electrical system.

SERVICE

We pride ourselves on providing friendly, reliable, and professional service to every customer.

AFFORDABILITY

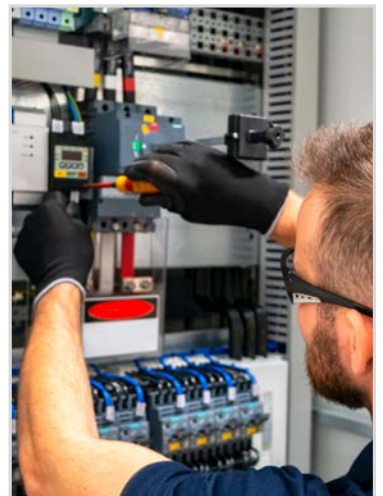
We offer competitive pricing and upfront estimates, so you know exactly what to expect before we begin any work.

SAFETY

We prioritize safety on every job, ensuring that your property and electrical system are safe and up to code.

SATISFACTION

We stand behind our work and are committed to your satisfaction. If you're not happy with the results, we'll make it right.



THE HISTORY OF OUR COMPANY

Our industry has undergone numerous advancements, and we have progressed alongside it. Let's take a glimpse into our beginnings and observe the ways in which we have grown in the past five decades to cater to our customers' demands. While the future remains uncertain, we take great pride in leveraging our rich history and expertise as a solid base for further development.



Founder Meno Yoder

1973

HUMBLE BEGININGS

The company started in 1973 when Menno Yoder acquired a garage door installation and service business from a local preacher. With a new name, Wayne Garage Door was the first service department established in the area.

1980

GROWING OUT TEAM

From its humble beginnings as a modest showroom, warehouse, and a team of only four employees, our enterprise steadily expanded by welcoming new members into our team. This growth was driven by our unwavering commitment to meeting the evolving needs of our valued customers.

1996

NEW BEGININGS

In 1996, Yoder retired from the business, but his legacy and the success of the company were ensured as he passed the reins to his sons, Luke & Ernie Yoder, who would carry on its prosperous journey. With a seamless transition of leadership, the business remained in capable hands, allowing it to thrive and build upon the foundation laid by Yoder.

2000

BUILDING OUR FUTURE

As Wayne Garage Door gained widespread recognition and became a well-known name, our service footprint naturally expanded. This growth provided us with the opportunity to open a brand new location in Cambridge, Ohio allowing us to bring our quality products and trusted services closer to the local community.

2007

A NEW PARTNER

The company's growth trajectory persisted, and in 2007, Bob Habeger joined the team as a Partner and General Manager. With his expertise and leadership, the company experienced rapid expansion and development, propelling it to new heights of success. Habeger's addition to the team brought fresh perspectives and strategic guidance, contributing to the continued growth and evolution of the company.



Installer Sal Sidoti



Service Tech Jason Poindexter



Salesman Matt Stutzman



Wayne Service Vehicle



2023 Maxx Electric Team



2023 Overhead Door Company of Akron™

2011

PARTNERSHIPS & ACQUISITIONS

Our commitment to growth and customer satisfaction led us to acquire Overhead Door Company of Akron™ in 2011 and Pinnacle Door in 2016. These additions strengthened our portfolio and allowed us to provide an even broader selection of top-notch products and solutions to meet the diverse needs of our customers.

2017

A NEW OWNER

In 2017, Bob Habeger assumed sole ownership of the company, ushering in a new era of growth and success. Under his leadership, the company has experienced continuous expansion. With a strong emphasis on excellence, Habeger recognized the importance of investing in a skilled and dedicated team who could meet and exceed customer expectations.

2021

EXPANDING SERVICES

In response to the demand for reliable electrical services in the residential, commercial, and industrial markets, Maxx Electric was founded with an unwavering dedication to ensuring reliability. With Wayne Garage Door as our guiding inspiration, we prioritize honesty, integrity, and delivering exceptional service to our customers in every interaction.

2023

BROADENING OUR REACH

As our business continues to thrive, we are actively expanding both our reach and the range of products we offer in order to cater to the evolving needs of our valued customers. In 2023, we embarked on an exciting journey to establish our new Ashland location, aiming to provide enhanced service to our customers in Ashland and Wayne County, as well as extend our reach to a broader customer base.



Eli Slabaugh 2022 Door Tech of The Year with President Bob Habeger



On the job training with John Shrock & Adam Krutz



2022 Wayne Team



Dover Headquarters

2150 SR 39 NW
Dover, Ohio 44662
www.waynedor.com
330.343.6679

Cambridge Location

9931 East Pike Road
Cambridge, Ohio 43725
www.waynedor.com
740.439.7555

Ashland Location

Coming Soon!
Ashland, Ohio
www.waynedor.com
419.651.0814



2150 SR 39 NW
Dover, Ohio 44662
www.waynedor.com
330.343.6679

The Genuine. The Original.



1750 Newberry St
Cuyahoga Falls, Ohio 44221
www.odcakron.com
330.969.6697



2184 SR 39 NW
Dover, Ohio 44662
www.maxxelectric.com
330.749.2498